

Update on USACE Dam and Levee Safety Programs

Eric Halpin, PE

Special Assistant for Dam and Levee Safety

Eric.C.Halpin@usace.army.mil

Barb Schuelke, PE

Dam Safety Program Manager

Barbara.R.Schuelke@usace.army.mil

Tammy Conforti, PE

Levee Safety Program Manager

Tammy.Conforti@usace.army.mil

April 2014



®

US Army Corps of Engineers
BUILDING STRONG®

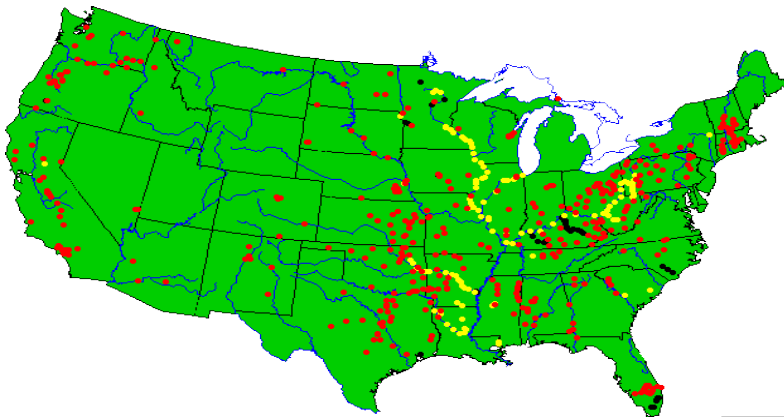


Outline

- Portfolio
- Dam and Levee Safety Programs
- Organization
- National Infrastructure Centers
 - ▶ Risk Management Center
 - ▶ Modeling, Mapping, and Consequence Center
 - ▶ Dam Safety Modification Mandatory Center of Expertise
- Points of Contact

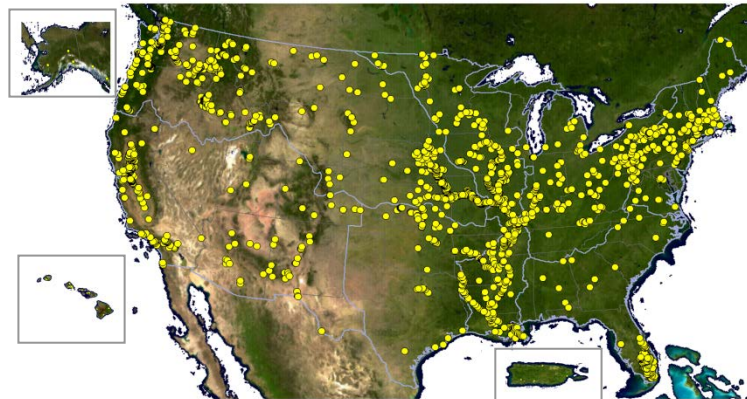


USACE Dam and Levee Portfolio



- 707 Dams
- 2,500 Levee Systems

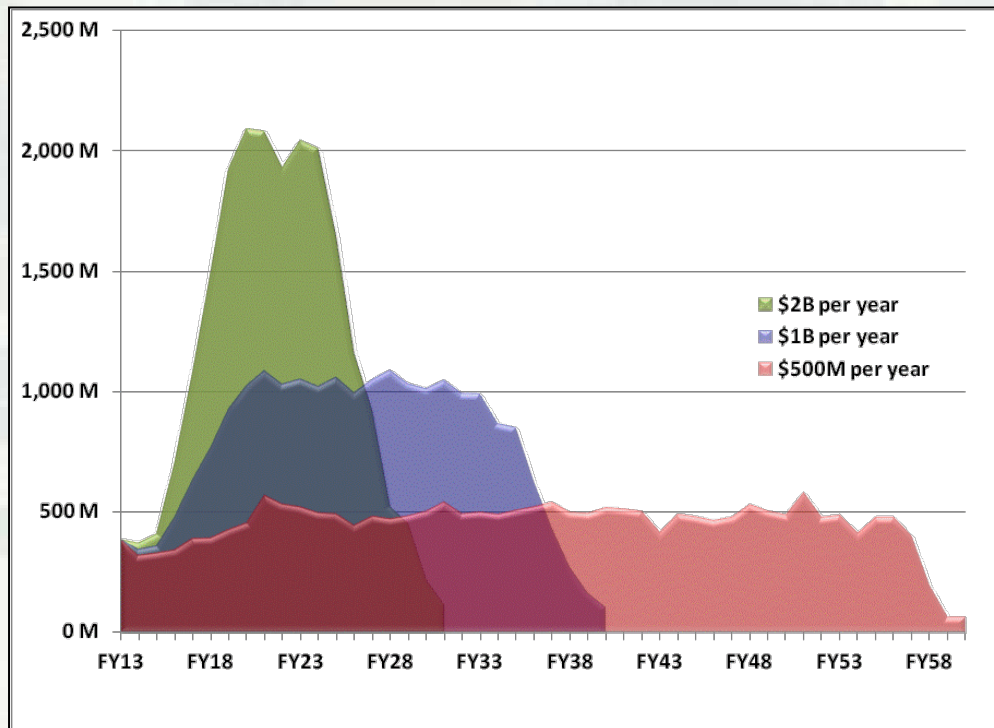
Infrastructure follows Floods,
People Follow Infrastructure



BUILDING STRONG®

USACE Dam Safety Program

Dam Safety Workflow for Three Funding Streams

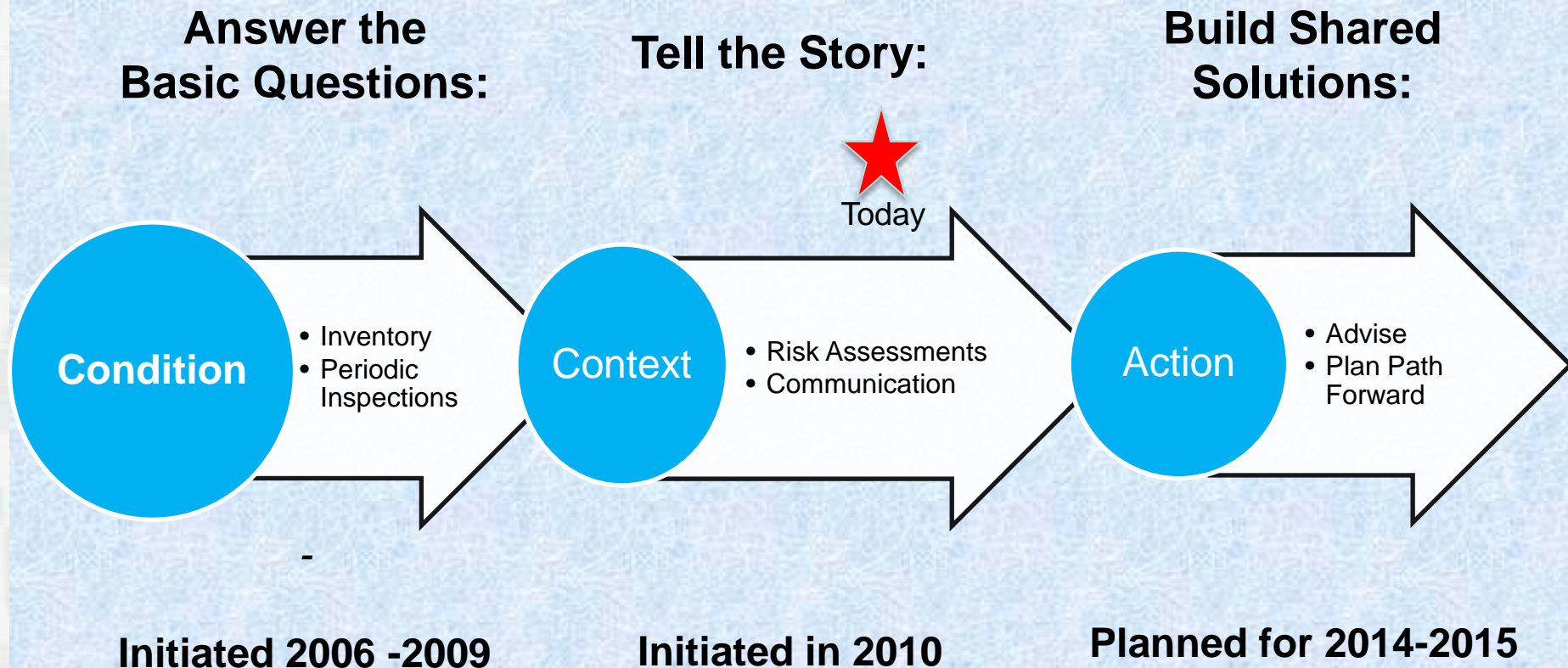


- The Dam Safety Investment Plan - a summary of estimated remediation costs and schedules for:
 - ▶ ~300 unsafe and potentially unsafe USACE dams (DSAC 1, 2, and 3)
 - ▶ Estimate FY58 build out of known modifications at current funding stream



USACE Levee Safety Program

Implementing the Risk Framework



Dam and Levee Safety Program Structure

HQUSACE

Dam and Levee Safety Officer – James Dalton
Special Assistant for Dam and Levee Safety – Eric Halpin
Levee Safety Program Manager – Tammy Conforti
Dam Safety Program Manager – Barb Schuelke

Levee Senior Oversight Group
&
Dam Senior Oversight Group

National Teams

Mapping, Modeling, and
Consequences Center
Ron Goldman

Risk Management Center
Nate Snorteland

MCX/Production Center
Pat Morgan

Dam Safety Adhoc Teams

Dam Safety Steering Committee
Policy and Procedures Team

Levee Safety Adhoc Teams

Levee Screenings
Vegetation
Policy Team
Periodic Inspections
National Levee Database
Inspection Tool

Regional Teams

Division Safety Teams

District Safety Teams



Ad Hoc Teams

National Centers

Legacy Organization



BUILDING STRONG®

Risk Management Center (RMC)

- Lead infrastructure risk management
- Support risk-informed decision-making for district commanders and Dam and Levee Safety Officers
- Support HQ prioritization and planning for risk reduction studies and activities
- Provide training
- Develop policy and tools
- QA/QC for safety and risk products
- Technical review of safety program products
- Manage reviews for Dam and Levee Safety
- Maintain sufficient A-E contracts necessary for program execution



Modeling, Mapping, and Consequence Center (MMCC)

- National center charged with producing hydraulic models, inundation maps, consequence estimations, and detailed assessment reports
- Support USACE risk assessment activities and development of national policy
 - Dam and Levee Safety programs, and
 - Critical Infrastructure Protection and Resilience program
- Coordinate technology development and enhance USACE technical competency in areas of consequences estimation and scientific and engineering analyses and mapping of dams and levees
- Maintain sufficient A-E contracts necessary for program execution



Dam Safety Modification Mandatory Center of Expertise (DSMMCX)

- Located in Huntington District
- National center of expertise – provides technical advice, oversight, review, and production capability for concepts, planning, design, and construction of USACE dam modification projects
- Responsible for promoting and developing technical competencies for execution of dam safety modifications
- Works in collaboration with the 7 Regional Dam Safety Production Centers (DSPCs) for mission execution and improving effectiveness and efficiency in delivery of products/services
- Mississippi Valley Division (MVD) DSPC is levee focused
- Maintain sufficient A-E contracts to ensure availability of specialized skills



Center POCs

- Risk Management Center (RMC)
 - ▶ Director – Nate Snorteland, Nathan.Snorteland@usace.army.mil
- Modeling Mapping Consequence Center (MMCC)
 - ▶ Director, Ron Goldman, Ron.C.Goldman@usace.army.mil
- Dam Safety Production Centers (DSPCs)
 - ▶ LRD @ Huntington, WV (MCX and DSPC) – Director, Pat Morgan, Steven.P.Morgan@usace.army.mil
 - ▶ SWD @ Tulsa, OK – Wade Anderson, Daniel.W.Anderson@usace.army.mil
 - ▶ SPD @ Sacramento, CA – Rick Poeppelman, Rick.L.Poeppelman@usace.army.mil
 - ▶ MVD @ Vicksburg, MS – Noah Vroman, Noah.D.Vroman@usace.army.mil
 - ▶ NAD @ Concord, MA – Daniel Rodriguez, Daniel.J.Rodriguez@usace.army.mil
 - ▶ SAD @ Mobile, AL – Chris Smith, Christopher.T.Smith@usace.army.mil
 - ▶ NWD/POD/TAD @ Omaha, NE – John Bertino, Jr., John.J.Bertino@usace.army.mil



Contract Needs

- Federal Business Opportunities at <https://www.fbo.gov>
- Center POCs



BUILDING STRONG®

The End



BUILDING STRONG®